

---

Sample Kit

TS2

TS3

TS4

PLUS

LEATHER

OUTDOOR

MATERIALS &

FINISHES

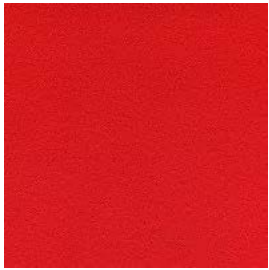
MILANI

---

**Sample Kit**

**TS2**

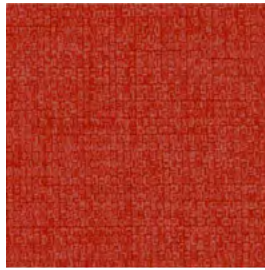
# TS2



**NE** 0013



**ZS** 06KO



**FTI** 4021

**NE**  
Mirage

**ZS**  
Zeus

**FTI**  
Time



# TS2 NE

Mirage

Pugi•ng®



Composizione / Composition /  
Composition  
**100% PL FR**



Resistenza allo sfregamento / Fastness to rubbing /  
Solidité au frottement  
**100.000 cycles Martindale**



Peso / Weight / Poids  
**330 g/m<sup>2</sup>**



Resistenza al fuoco / Fire retardancy / Réaction au feu  
**CLASSE 1 IM** a seconda dei modelli (vedi elenco omologazioni)  
**EN 1021-1/2 cigarette & match test UK**  
**M1 FR**  
**BS 5852 Crib 5 (please contact sales dept. for info)**



Resistenza alla luce / Light fastness /  
Résistance à la lumière  
**5 (EN ISO 105 B02)**



NE 0013



NE 0173



NE 0236



NE 0234



NE 0120



NE 0012



NE 0053



NE 0426



NE 0014



NE 0411



NE 0496



NE 0377



NE 0378



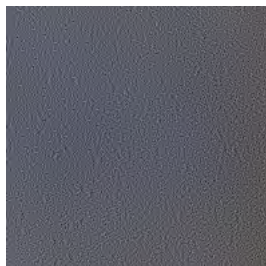
NE 0331



NE 0333



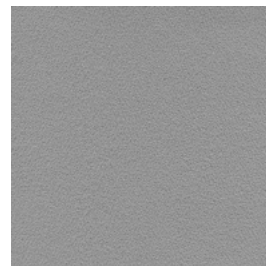
NE 0018



NE 0607



NE 0643



NE 0015



NE 0625



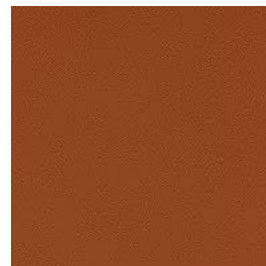
NE 0533



NE 0532



NE 0534



NE 0572



Composizione / Composition / Composition

**85% PVC**  
**10% PL**  
**5% CO**



Peso / Weight / Poids

**600 g/m<sup>2</sup>**



Resistenza alla luce / Light fastness / Résistance à la lumière

**5-6 (EN ISO 105 B02)**



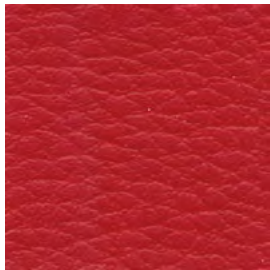
Resistenza allo sfregamento / Fastness to rubbing / Solidité au frottement

**> 51.000 Martindale**

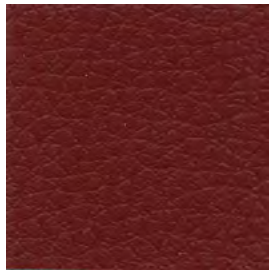


Resistenza al fuoco / Fire retardancy / Réaction au feu

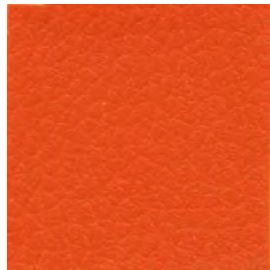
**CLASSE 1 IM a seconda dei modelli (vedi elenco omologazioni)**  
**EN 1021-1/2 cigarette & match test UK**



ZS 06KO



ZS 06ME



ZS 06KN



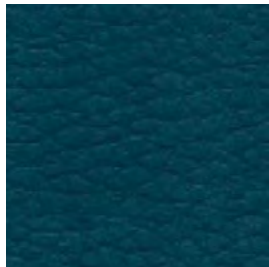
ZS 03CV



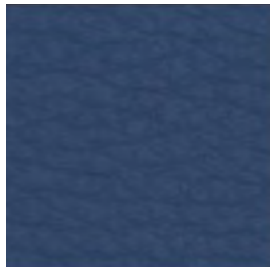
ZS 07EV



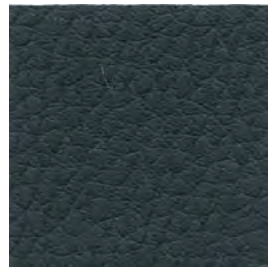
ZS 07KF



ZS 07F3



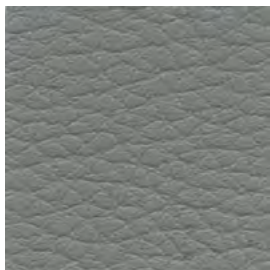
ZS 08I1



ZS 02F1



ZS 0901



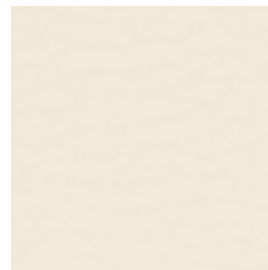
ZS 02E8



ZS 02DO



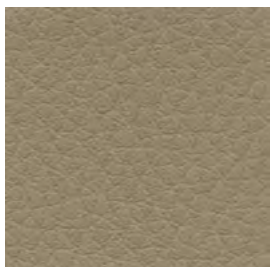
ZS 01B4



ZS 04HO



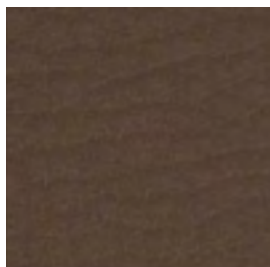
ZS 04L1



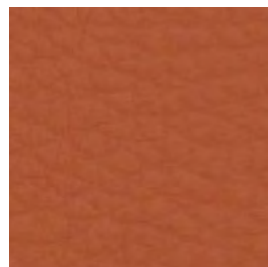
ZS 04HJ



ZS 05L1



ZS 05HO



ZS 06M7



Composizione / Composition / Composition  
**50% PET - 50% R-PET**



Peso / Weight / Poids  
**350 g/m<sup>2</sup>**



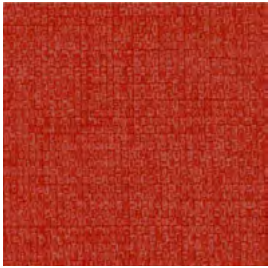
Resistenza alla luce / Light fastness / Résistance à la lumière  
**ISO 105-B02 (Xenotest)**



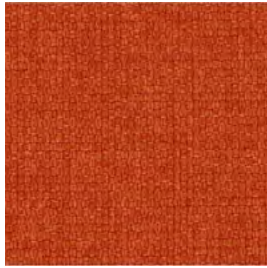
Resistenza allo sfregamento / Fastness to rubbing / Solidité au frottement  
**>100.000 Martindale**



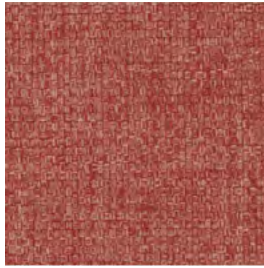
Resistenza al fuoco / Fire retardancy / Réaction au feu  
**CLASSE 1 IT**  
**UNI 9175 Class 1 IM**  
**EN 1021-1/2 cigarette & match test UK**  
**BS 7176 UK**  
**BS 5852 Crib 5 (please contact sales dept. for info)**



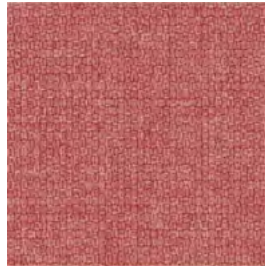
FTI 4021



FTI 3082



FTI 4079



FTI 4022



FTI 1010



FTI 8048



FTI 8004



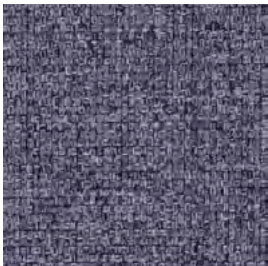
FTI 8006



FTI 8007



FTI 7036



FTI 6026



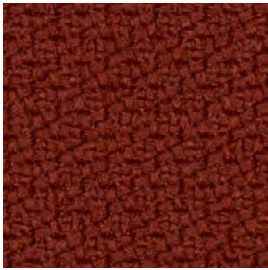
FTI 6001

---

**Sample Kit**

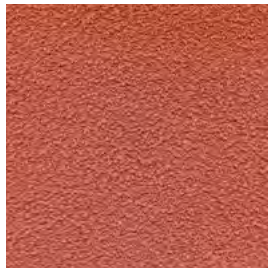
**TS3**

# TS3



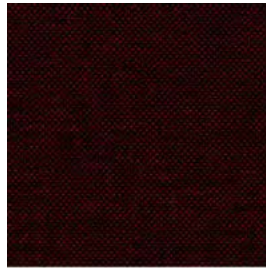
GST 63075

**GST**  
Step



PPO 552

**PPO**  
Poseidon



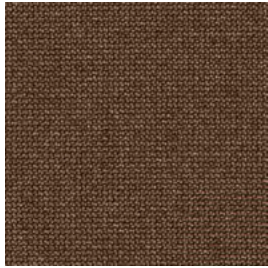
RC 8514

**RC**  
Roccia



ER 0006

**ER**  
Era



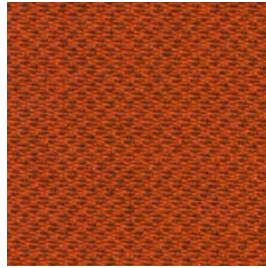
GRE 63133

**GRE**  
Renewed Loop



FE 0202

**FE**  
Fenice



SL 4566

**SL**  
Sealife



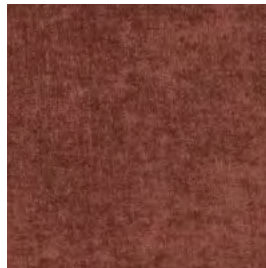
ML 0014

**ML**  
Main Line Flax



MLT 0002

**MLT**  
Main Line Twist



CS 200

**CS**  
Callas



LBA 1584

**LBA**  
Batik

TS3  
**GST**

Step  
**Gabriel**



Composizione / Composition / Composition  
**100% TREVIRA CS**



Peso / Weight / Poids  
**470 g/lm**



Resistenza alla luce / Light fastness / Résistance à la lumière  
**5-7 (EN ISO 105 B02)**



Resistenza allo sfregamento / Fastness to rubbing  
/ Solidité au frottement  
**100.000 Martindale**



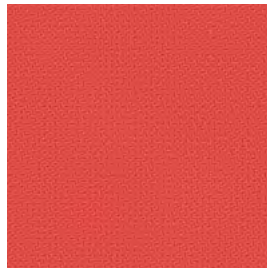
Resistenza al fuoco / Fire retardancy / Réaction au feu  
**CLASSE 1 IT**  
**EN 1021-1/2 cigarette & match test UK**  
**BS 5852 Crib 5 (please contact sales dept. for info)**  
**M1 FR**  
**DIN 4102-B1**



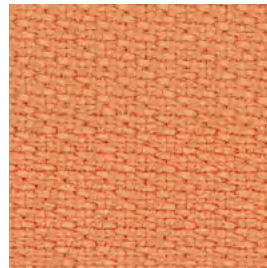
**GST 63075**



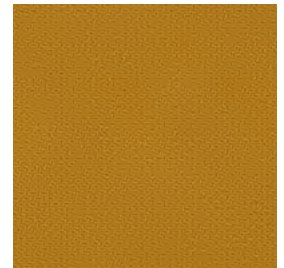
**GST 64159**



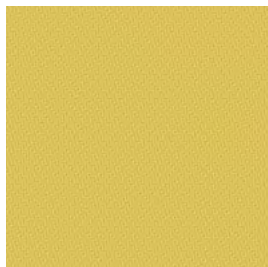
**GST 64178**



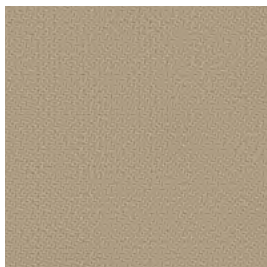
**GST 63739**



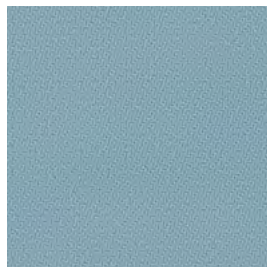
**GST 62057**



**GST 68701**



**GST 61149**



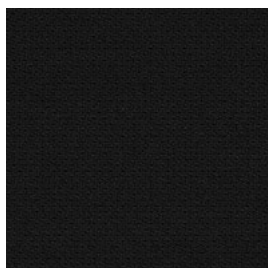
**GST 67004**



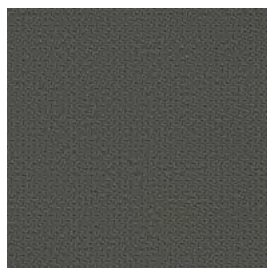
**GST 66151**



**GST 66148**



**GST 60999**



**GST 60092**



**GST 68161**



**GST 68121**

# TS3 PPO



Composizione / Composition / Composition  
**100% PES riciclato certificato Seaqual**  
/ recycled Seaqual certified / recyclé  
certifié Seaqual



Peso / Weight / Poids  
**500 g/m<sup>2</sup>**



Resistenza alla luce / Light fastness / Résistance à la lumière  
**6±1 (EN ISO 105 B02)**



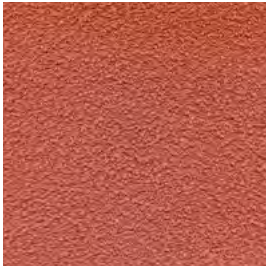
Resistenza allo sfregamento / Fastness to rubbing / Solidité au frottement  
**>100.000 Martindale**



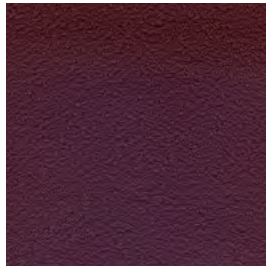
Resistenza al fuoco / Fire retardancy / Réaction au feu  
**CLASSE 1 IT**  
**EN 1021-1/2 cigarette & match test UK**  
**BS 5852 Crib 5 (please contact sales dept. for info)**



**SEAQUAL**  
INITIATIVE



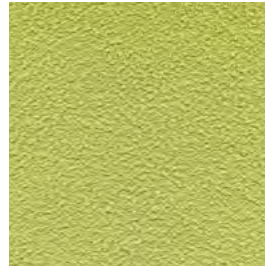
PPO 0552



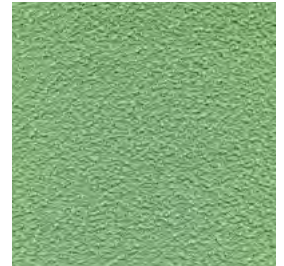
PPO 0252



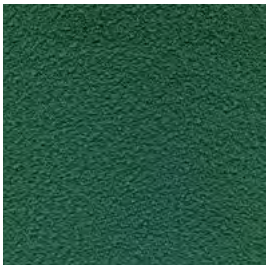
PPO 0051



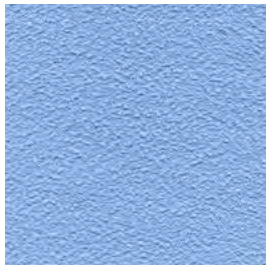
PPO 0453



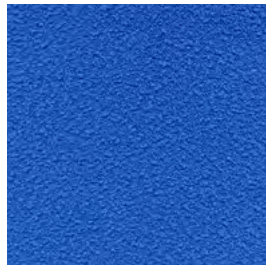
PPO 0451



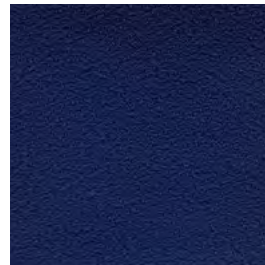
PPO 0454



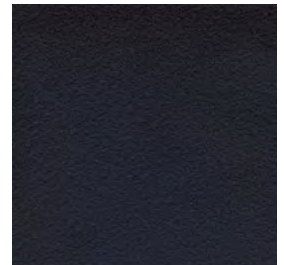
PPO 0351



PPO 0301



PPO 0304



PPO 0651



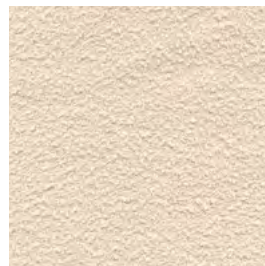
PPO 0604



PPO 0602



PPO 0501



PPO 0503



Composizione / Composition / Composition  
**100% PES Trevira CS**



Peso / Weight / Poids  
**250 g/m<sup>2</sup>**



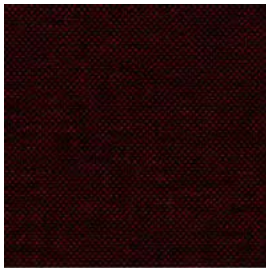
Resistenza alla luce / Light fastness / Résistance à la lumière  
**6 (EN ISO 105 B02)**



Resistenza allo sfregamento / Fastness to rubbing / Solidité au frottement  
**70.000 cycles Martindale**



Resistenza al fuoco / Fire retardancy / Réaction au feu  
**CLASSE 1 IM a seconda dei modelli (vedi elenco omologazioni)**  
**EN 1021-1/2 cigarette & match test UK**  
**BS 5852 Crib 5 (please contact sales dept. for info)**  
**M1 FR**



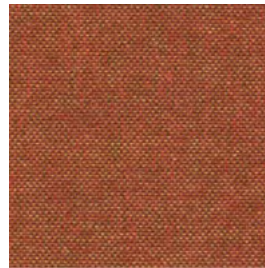
RC 8514



RC 8515



RC 5504



RC 4501



RC 3503



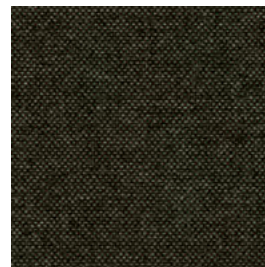
RC 3506



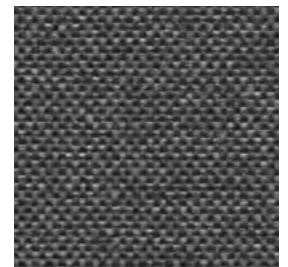
RC 7503



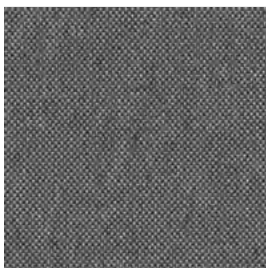
RC 7016



RC 2517



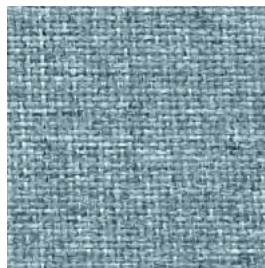
RC 8030



RC 8502



RC 6502



RC 6501



RC 8501



RC 1502



Composizione / Composition / Composition  
**100% PL**



Peso / Weight / Poids  
**320 g/m<sup>2</sup> ±5% g/m<sup>2</sup>**



Resistenza alla luce / Light fastness / Résistance à la lumière  
**5 (EN ISO 105 B02)**



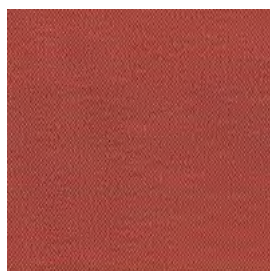
Resistenza allo sfregamento / Fastness to rubbing / Solidité au frottement  
**≥100.000 Martindale**



Resistenza al fuoco / Fire retardancy / Réaction au feu  
**EN 1021-1/2 cigarette & match test UK**



ER 0006



ER 0029



ER 0019



ER 0024



ER 0041



ER 0002



ER 0032



ER 0033



ER 0034



ER 0035



ER 0040



ER 0015



ER 0020

TS3  
**GRE**

Renewed loop  
**Gabriel**



Composizione / Composition / Composition  
**100% POST CONSUMER / POST RECYCLED PL**



Peso / Weight / Poids  
**370g/lm**



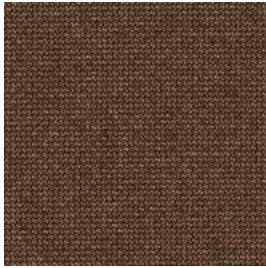
Resistenza alla luce / Light fastness / Résistance à la lumière  
**(EN ISO 105 B02)**



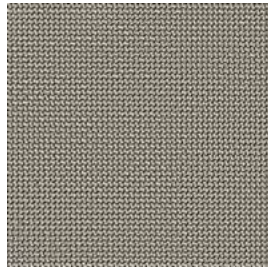
Resistenza allo sfregamento / Fastness to rubbing / Solidité au frottement  
**100.000 Martindale**



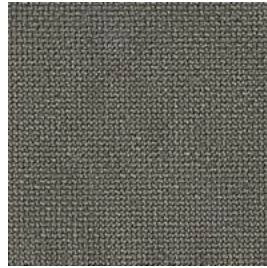
Resistenza al fuoco / Fire retardancy / Réaction au feu  
**EN 1021-1/2 cigarette & match test UK  
DIN 13501-1B**



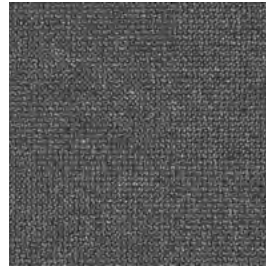
**GRE 63133**



**GRE 61280**



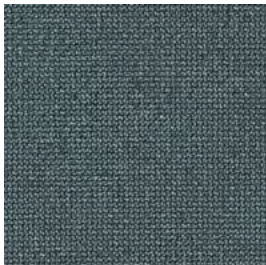
**GRE 61281**



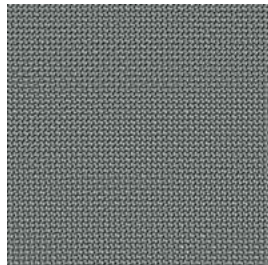
**GRE 60341**



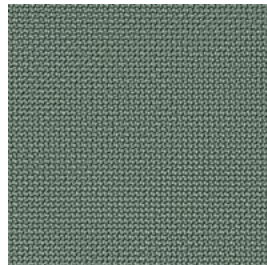
**GRE 66256**



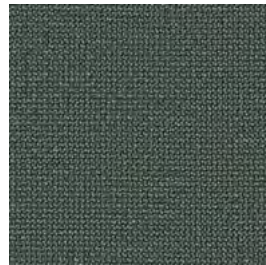
**GRE 66254**



**GRE 60340**



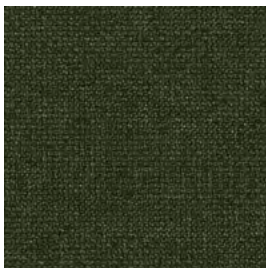
**GRE 68290**



**GRE 68291**



**GRE 68288**



**GRE 68285**



Composizione / Composition / Composition  
**75% WO**  
**25% PA**



Peso / Weight / Poids  
**335±7% g/m<sup>2</sup>**



Resistenza alla luce / Light fastness / Résistance à la lumière  
**6±1 (EN ISO 105 B02)**



Resistenza allo sfregamento / Fastness to rubbing / Solidité au frottement  
**>100.000 Martindale**



Resistenza al fuoco / Fire retardancy / Réaction au feu  
**CLASSE 1 IT**  
**BS 5852 Crib 5 (please contact sales dept. for info)**  
**EN 1021-1/2 cigarette & match test UK**



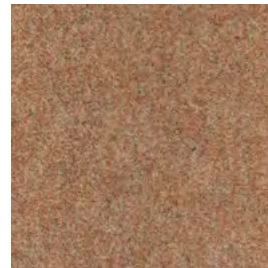
FE 0202



FE 0154



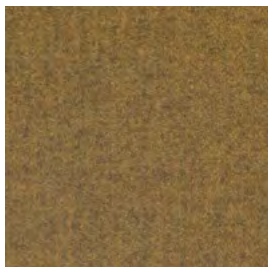
FE 0103



FE 0504



FE 0503



FE 0057



FE 0051



FE 0453



FE 0301



FE 0302



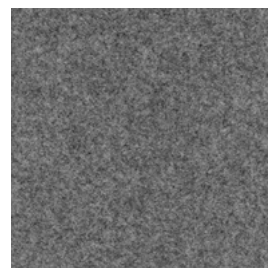
FE 0313



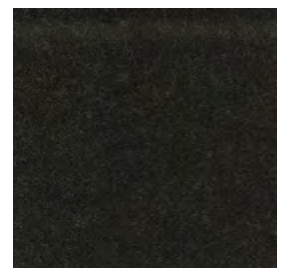
FE 0251



FE 0621



FE 0602



FE 0651

# TS3 SL

Sealife  
FIDIVI\*



Composizione / Composition / Composition

**100% PES riciclato certificato Seaqual**  
**/ recycled Seaqual certified / recyclé certifié Seaqual**



Peso / Weight / Poids

**460 g/m<sup>2</sup>**



Resistenza alla luce / Light fastness / Résistance à la lumière

**6 (UNI EN ISO 105-B02)**



Resistenza allo sfregamento / Fastness to rubbing / Solidité au frottement

**>100.000 Martindale cycles**

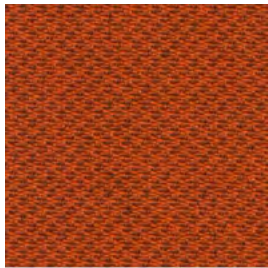


Resistenza al fuoco / Fire retardancy / Réaction au feu

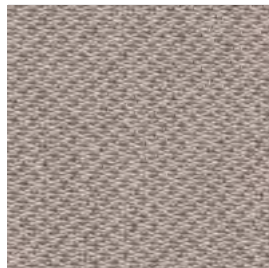
**EN 1021-1/2 cigarette & match test UK**



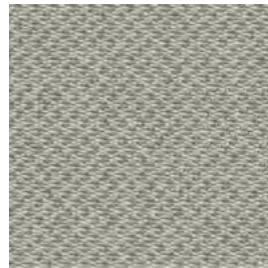
SEAQUAL  
INITIATIVE



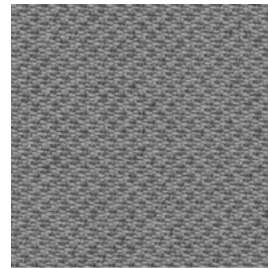
SL 4566



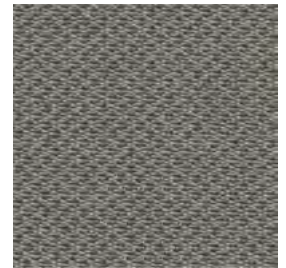
SL 4522



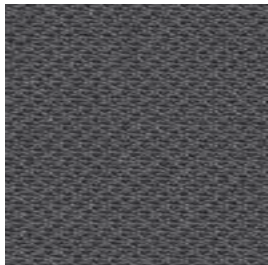
SL 1506



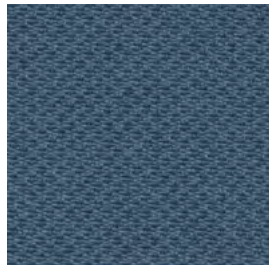
SL 8532



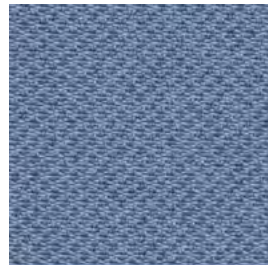
SL 2519



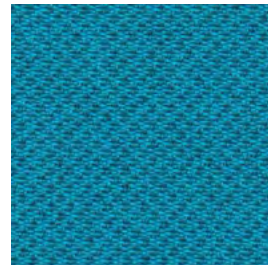
SL 8517



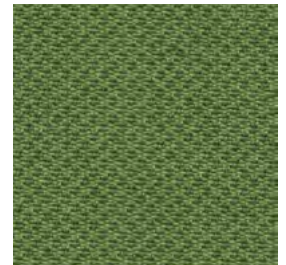
SL 6512



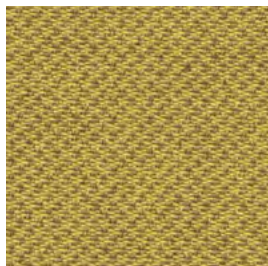
SL 5592



SL 6591



SL 7521



SL 3509

# TS3 ML

Main Line Flax  
**camira**



Composizione / Composition / Composition  
**75% WOOL**  
**25% FLAX**



Peso / Weight / Poids  
**437g/m<sup>2</sup> ±5% g/m<sup>2</sup>**



Resistenza alla luce / Light fastness / Résistance à la lumière  
**4-5 (EN ISO 105 B02)**



Resistenza allo sfregamento / Fastness to rubbing  
/ Solidité au frottement  
**≥50.000 Martindale**



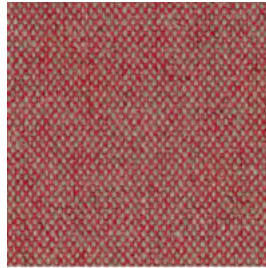
Resistenza al fuoco / Fire retardancy / Réaction au feu  
**Classe 1 IT**  
**EN 1021-1/2 cigarette & match test UK**  
**BS 5852 Crib 5 (please contact sales dept. for info)**



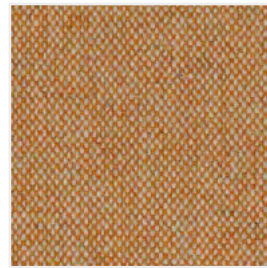
ML 0014



ML 0013



ML 0003



ML 0008



ML 0023



ML 0020



ML 0017



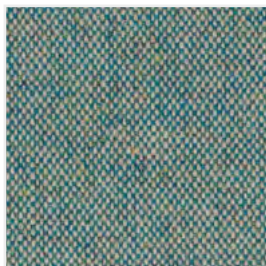
ML 0007



ML 0018



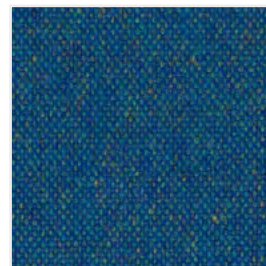
ML 0010



ML 0024



ML 0022



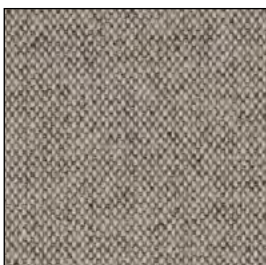
ML 0034



ML 0036



ML 0016



ML 0002

TS3  
**MLT**

Main Line Twist  
**camira**



Composizione / Composition / Composition  
**75% WOOL**  
**25% FLAX**



Peso / Weight / Poids  
**437 ±5% g/m<sup>2</sup>**



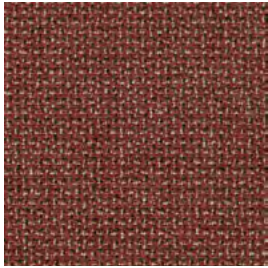
Resistenza alla luce / Light fastness / Résistance à la lumière  
**4-5 (EN ISO 105 B02)**



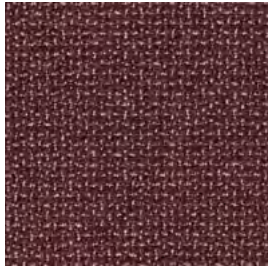
Resistenza allo sfregamento / Fastness to rubbing  
/ Solidité au frottement  
**≥50.000 Martindale**



Resistenza al fuoco / Fire retardancy / Réaction au feu  
**Classe 1 IT**  
**EN 1021-1/2 cigarette & match test UK**  
**BS 5852 Crib 5 (please contact sales dept. for info)**



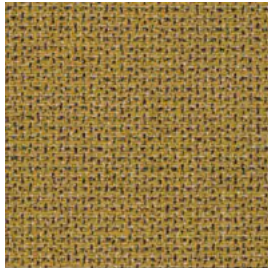
**MLT 0002**



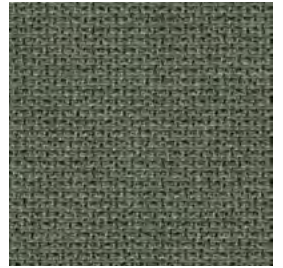
**MLT 0006**



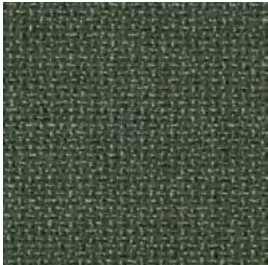
**MLT 0010**



**MLT 0001**



**MLT 0011**



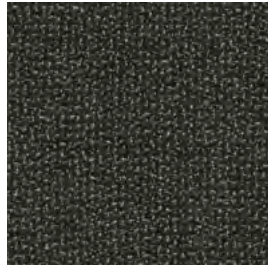
**MLT 0008**



**MLT 0004**



**MLT 0005**



**MLT 0015**



**MLT 0014**



**MLT 0013**



**MLT 0012**

TS3  
CS



Composizione / Composition / Composition  
**100% PES**



Peso / Weight / Poids  
**570 g/m<sup>2</sup>**



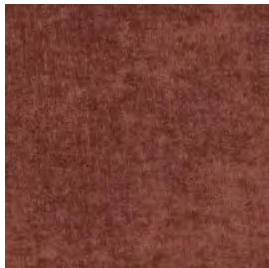
Resistenza alla luce / Light fastness / Résistance à la lumière  
**4 (UNI EN ISO 105-B02)**



Resistenza allo sfregamento / Fastness to rubbing  
/ Solidité au frottement  
**> 80.000 Martindale cycles**



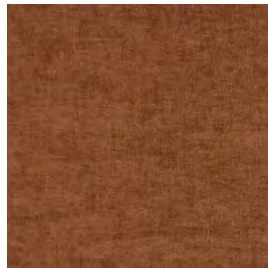
Resistenza al fuoco / Fire retardancy / Réaction au feu  
**CLASSE 1 IT**  
**EN 1021-1/2 cigarette & match test UK**



**CS 0200**



**CS 0703**



**CS 0301**



**CS 0700**



**CS 0902**



**CS 0806**



**CS 0608**



**CS 0804**



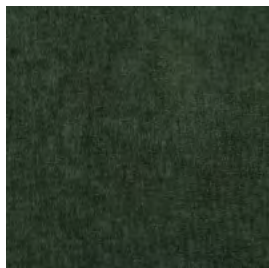
**CS 0107**



**CS 0401**



**CS 0503**



**CS 0506**



Composizione / Composition / Composition

**92,4% PVC**  
**7,6% PL**



Peso / Weight / Poids

**750±50 g/m<sup>2</sup>**



Resistenza alla luce / Light fastness / Résistance à la lumière

**≥ 7 (EN ISO 105 B02)**



Resistenza allo sfregamento / Fastness to rubbing

/ Solidité au frottement

**100.000 Martindale**



Resistenza al fuoco / Fire retardancy / Réaction au feu

**CLASSE 1 IT**

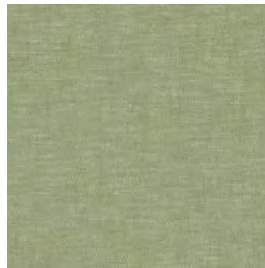
**EN 1021-1/2 cigarette & match test UK**



**LBA 1584**



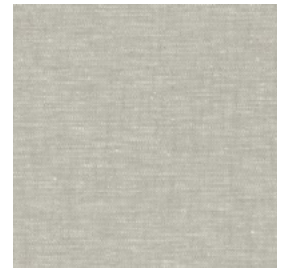
**LBA A57**



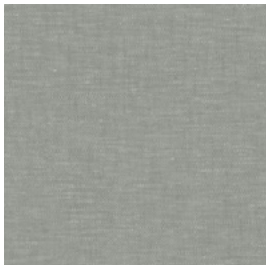
**LBA V019**



**LBA 7088**



**LBA 2270**



**LBA 7089**



**LBA 2266**



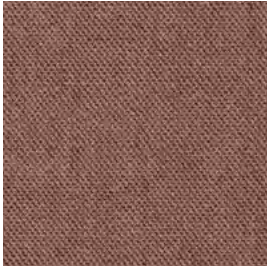
**LBA 8085**

---

**Sample Kit**

**TS4**

# TS4



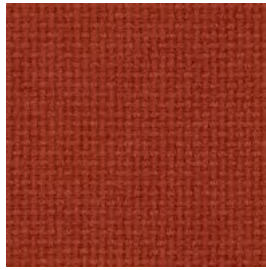
**GCP** 7201

**GCP**  
Capture



**MX** 0632

**MX**  
Remix



**GNO** 64272

**GNO**  
Nobel



**AVC** 804

**AVC**  
Volta Celeste



# TS4 GCP

Capture  
**Gabriel**



Composizione / Composition / Composition  
**85% WOOL**  
**15% PA**



Peso / Weight / Poids  
**475 g/lm**



Resistenza alla luce / Light fastness / Résistance à la lumière  
**5-7 (EN ISO 105 B02)**



Resistenza allo sfregamento / Fastness to rubbing / Solidité au frottement  
**200.000 cycles Martindale**



Resistenza al fuoco / Fire retardancy / Réaction au feu  
**CLASSE 1 IT**  
**EN 1021-1/2 cigarette & match test UK**



**GCP 7201**



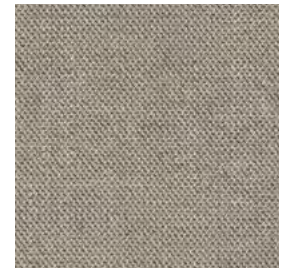
**GCP 3601**



**GCP 3202**



**GCP 3301**



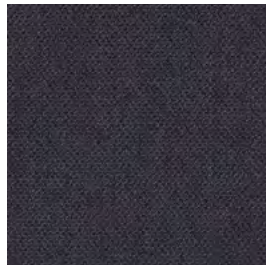
**GCP 5103**



**GCP 6401**



**GCP 2901**



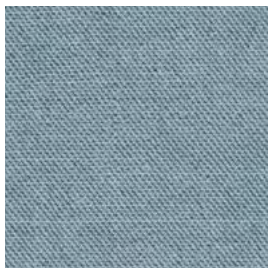
**GCP 5201**



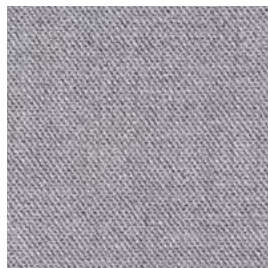
**GCP 4601**



**GCP 6602**



**GCP 3302**



**GCP 4102**



Composizione / Composition / Composition

**90% WOOL**

**10% NY**



Peso / Weight / Poids

**420 g/lm**



Resistenza alla luce / Light fastness / Résistance à la lumière

**5-7 (EN ISO 105 B02)**



Resistenza allo sfregamento / Fastness to rubbing / Solidité au frottement

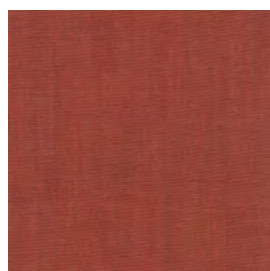
**100.000 cycles Martindale**



Resistenza al fuoco / Fire retardancy / Réaction au feu

**CLASSE 1 IT**

**EN 1021-1/2 cigarette & match test UK**



**MX 0632**



**MX 0653**



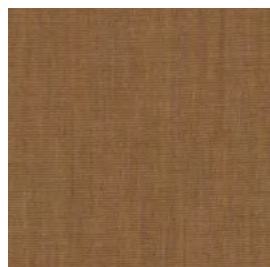
**MX 0612**



**MX 0242**



**MX 0233**



**MX 0252**



**MX 0422**



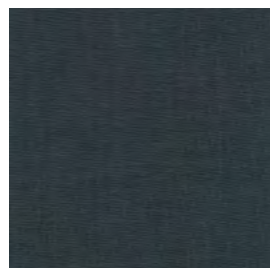
**MX 0933**



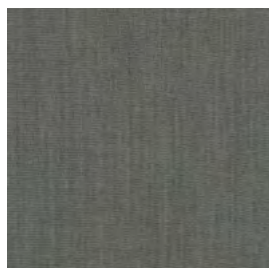
**MX 0982**



**MX 0762**



**MX 0753**



**MX 0133**



**MX 0722**



**MX 0123**

TS4  
**GNO**

Nobel

**Gabriel**



Composizione / Composition / Composition  
**100% WOOL**



Peso / Weight / Poids  
**800 g/lm**



Resistenza alla luce / Light fastness / Résistance à la lumière  
**5-7 (EN ISO 105 B02)**



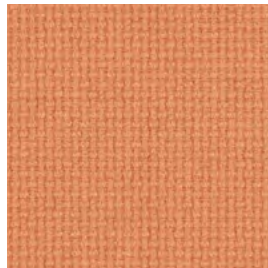
Resistenza allo sfregamento / Fastness to rubbing / Solidité au frottement  
**75.000 cycles Martindale EN ISO 12945-2**  
**50.000 cycles Martindale ASTM D4966**



Resistenza al fuoco / Fire retardancy / Réaction au feu  
**CLASSE 1 IT**  
**EN 1021-1/2 cigarette & match test UK**  
**BS 5852 Crib 5 (please contact sales dept. for info)**



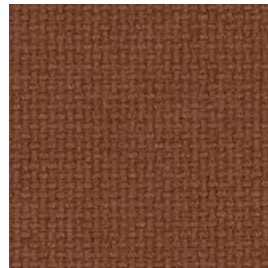
**GNO 64272**



**GNO 63141**



**GNO 65145**



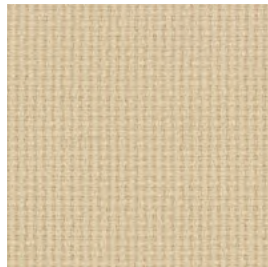
**GNO 61301**



**GNO 61297**



**GNO 62136**



**GNO 61295**



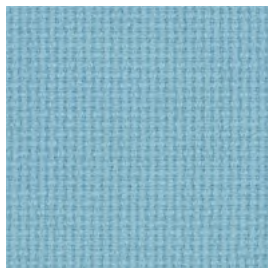
**GNO 68302**



**GNO 68303**



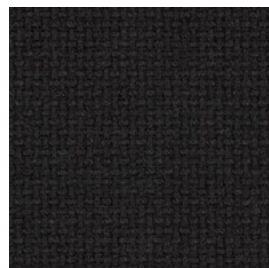
**GNO 68304**



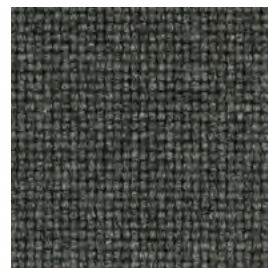
**GNO 66266**



**GNO 66267**



**GNO 60355**



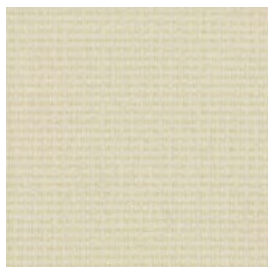
**GNO 60350**



**GNO 60354**



**GNO 60347**



**GNO 61290**

# TS4 AVC

Volta Celeste

imNativ.



Composizione / Composition / Composition  
**100% PL (recycled-biodegradable)**



Peso / Weight / Poids  
**950 g/m**



Resistenza alla luce / Light fastness / Résistance à la lumière  
**4-5 (EN ISO 105 B02)**



Resistenza allo sfregamento / Fastness to rubbing / Solidité au frottement  
**100.000 cycles Martindale**



Resistenza al fuoco / Fire retardancy / Réaction au feu  
**EN 1021-1/2 cigarette & match test UK**



AVC 0411



AVC 0900



AVC 0410



AVC 0409



AVC 0408



AVC 0507



AVC 0809



AVC 0804



AVC 0701



AVC 0601



AVC 0811



AVC 0406



AVC 0606



AVC 0105



AVC 0100

---

**Sample Kit**

**PLUS**

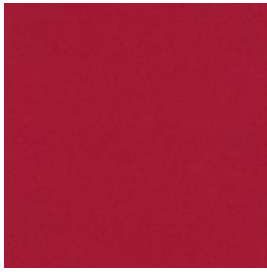
---

# PLUS



**KST** 0686

**KST**  
Steelcut Trio



**KDI** 0636

**KDI**  
Divina



**CZ** 0024

**CZ**  
Cortez



Composizione / Composition / Composition

**90% WOOL**

**10% NY**



Peso / Weight / Poids

**770 g/lm**



Resistenza alla luce / Light fastness / Résistance à la lumière

**5-7 (EN ISO 105 B02)**



Resistenza allo sfregamento / Fastness to rubbing / Solidité au frottement

**100.000 cycles Martindale**



Resistenza al fuoco / Fire retardancy / Réaction au feu

**CLASSE 1 IT**

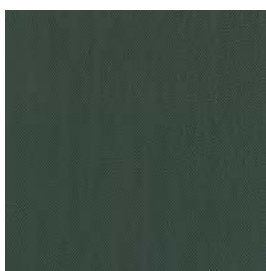
**EN 1021-1/2 cigarette & match test UK**



**KST 0686**



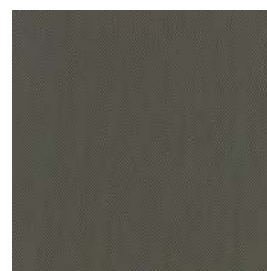
**KST 0946**



**KST 0966**



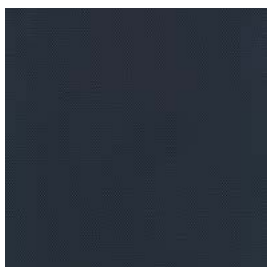
**KST 0253**



**KST 0266**



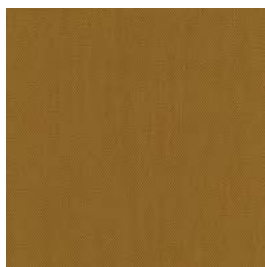
**KST 0883**



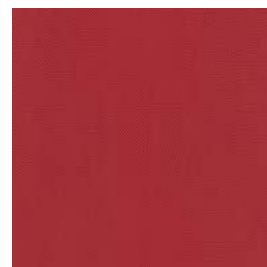
**KST 0796**



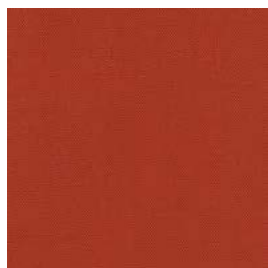
**KST 0283**



**KST 0466**



**KST 0553**



**KST 0533**



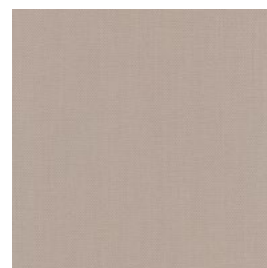
**KST 0436**



**KST 0506**



**KST 0236**



**KST 0226**



Composizione / Composition / Composition  
**100% WV**



Peso / Weight / Poids  
**840 g/m**



Resistenza alla luce / Light fastness / Résistance à la lumière  
**5-7 (EN ISO 105 B02)**



Resistenza allo sfregamento / Fastness to rubbing / Solidité au frottement  
**45.000 cycles Martindale**



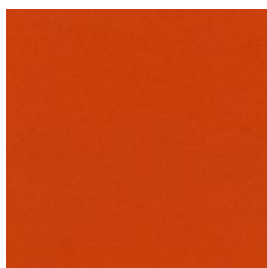
Resistenza al fuoco / Fire retardancy / Réaction au feu  
**CLASSE 1 IT**  
**EN 1021-1/2 cigarette & match test UK**  
**DIN 4102 B1**



**KDI 0636**



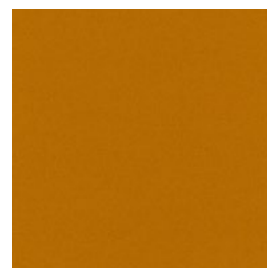
**KDI 0652**



**KDI 0542**



**KDI 0552**



**KDI 0462**



**KDI 0856**



**KDI 0886**



**KDI 0686**



**KDI 0756**



**KDI 0742**



**KDI 0676**



**KDI 0224**



**KDI 0106**



Composizione / Composition / Composition  
**100% PL TREVIRA CS**



Peso / Weight / Poids  
**630 g/lm**



Resistenza allo sfregamento / Fastness to rubbing / Solidité au frottement  
**80.000 cycles Martindale**



Resistenza al fuoco / Fire retardancy / Réaction au feu  
**CLASSE 1 IT**  
**EN 1021-1/2 cigarette & match test UK**



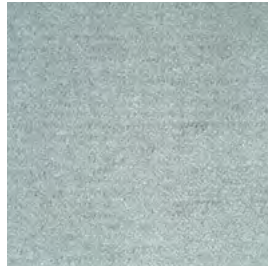
CZ 0024



CZ 0009



CZ 0012



CZ 0014



CZ 0002



CZ 0004



CZ 0016



CZ 0018



CZ 0007

---

**Sample Kit**

**LEATHER**

# LEATHER LN



Composizione / Composition / Composition

**Pelle bovina / Bovine leather / Cuir bovin**

Spessore / Thickness / Épaisseur

**0,90/1,00 mm**

Grandezza media / Average size / Dimension moyenne

**4,40 m<sup>2</sup>**



Resistenza alla luce / Light fastness / Résistance à la lumière

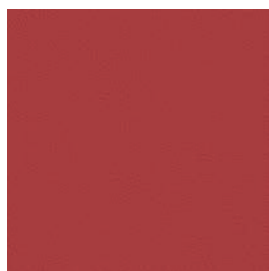
**5 (EN ISO 105 B02)**



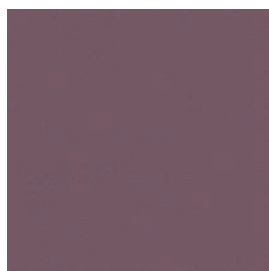
Resistenza allo sfregamento / Fastness to rubbing / Solidité au frottement

**500 dry rubs/battute a secco**

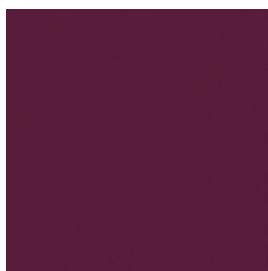
**150 wet/rubs**



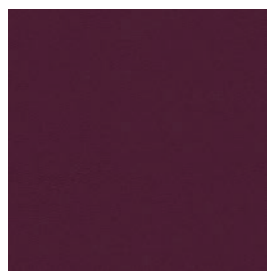
LN 2511



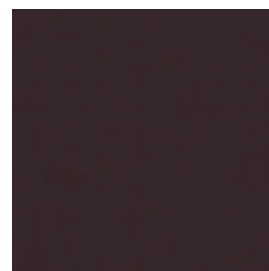
LN 7704



LN 7701



LN 5484



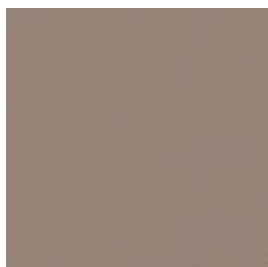
LN 2557



LN 6688



LN 5478



LN 3396



LN 2264



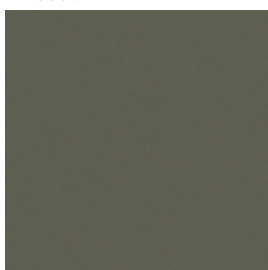
LN 5432



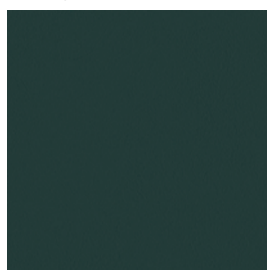
LN 6400



LN 2535



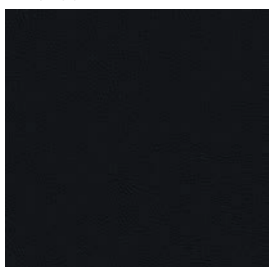
LN 3360



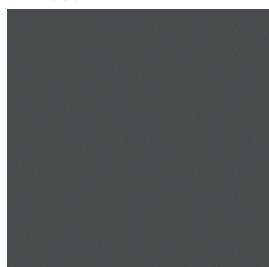
LN 2561



LN 0443



LN 1000



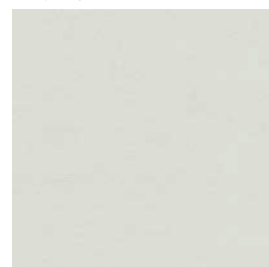
LN 2500



LN 2527



LN 2523



LN 2200

# LEATHER LX



Composizione / Composition / Composition  
**Pelle bovina / Bovine leather / Cuir bovin**

Spessore / Thickness / Épaisseur

**0,90 mm**

Grandezza media / Average size / Dimension moyenne

**4,40 m<sup>2</sup>**



Resistenza alla luce / Light fastness / Résistance à la lumière

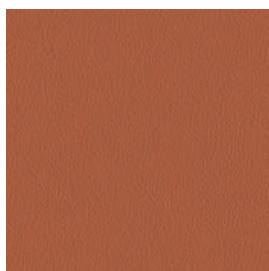
**5 (EN ISO 105 B02)**



Resistenza allo sfregamento / Fastness to rubbing / Solidité au frottement

**500 dry rubs/battute a secco**

**150 wet rubs/battute a umido**



**LX 0305**



**LX 0440**



**LX 4450**



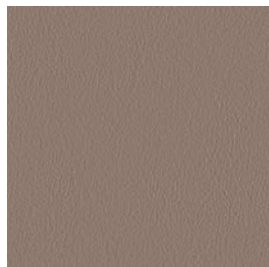
**LX 4492**



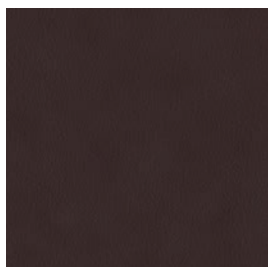
**LX 0677**



**LX 0134**



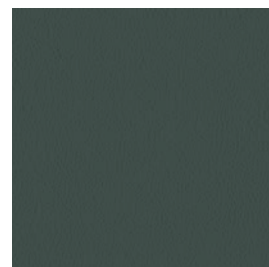
**LX 0611**



**LX 2829**



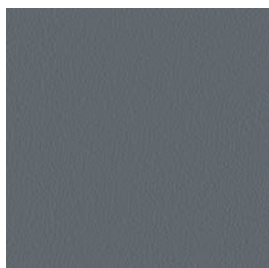
**LX 0316**



**LX 0460**



**LX 0344**



**LX 0472**



**LX 0158**

---

Sample Kit

OUTDOOR

---

## SP1



PO 0300

**PO**  
Panarea

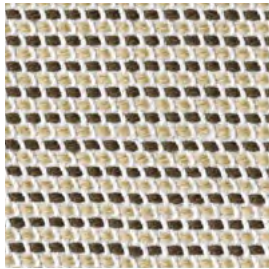


B 0300

**B**  
Basic

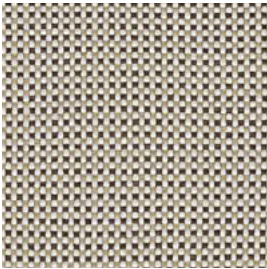
---

## SP2



AL 0100

**AL**  
Adriatica Libeccio

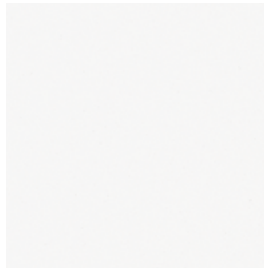


AM 0100

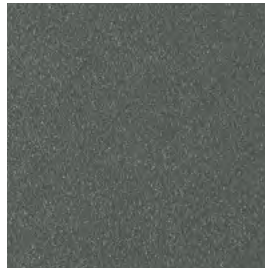
**AM**  
Adriatica Maestrale

# Metal finish

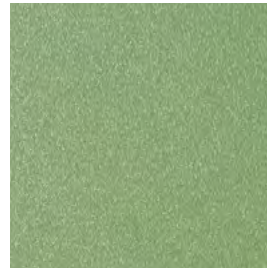
Finiture metalliche goffrate  
Embossed metal finishes  
Finitions métalliques gaufrés



**W** Signal white



**B4** Traffic grey



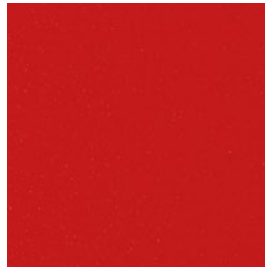
**K1** Pale green



**X** Gentian blue



**J1** Golden yellow



**H2** Pure red

Code	Colour	Ref
<b>W</b>	Signal white	<b>RAL 9003</b>
<b>B4</b>	Traffic grey	<b>RAL 7043</b>
<b>K1</b>	Pale green	<b>RAL 6021</b>
<b>X</b>	Gentian blue	<b>RAL 5010</b>
<b>J1</b>	Golden yellow	<b>RAL 1004</b>
<b>H2</b>	Pure red	<b>RAL 3028</b>

SP1  
**PO**



Composizione / Composition / Composition  
**100% PP**



Peso / Weight / Poids  
**200 g/m<sup>2</sup>**



Resistenza alla luce / Light fastness / Résistance à la lumière  
**7-8 (ISO 105 B02)**



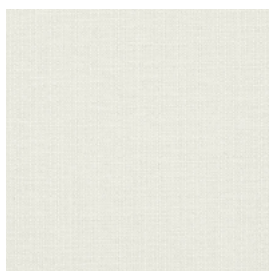
Resistenza allo sfregamento / Fastness to rubbing / Solidité au frottement  
**> 40.000 Martindale**



Resistenza al fuoco / Fire retardancy / Réaction au feu  
**NFPA 260 Class 1**



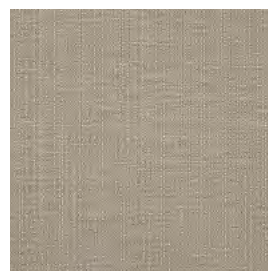
**PO 0300**



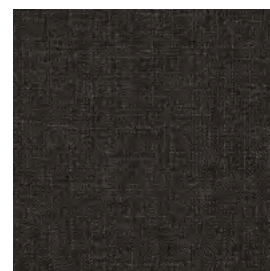
**PO 0111**



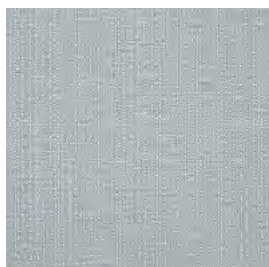
**PO 0100**



**PO 0400**



**PO 0405**



**PO 0600**



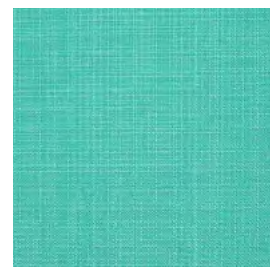
**PO 0607**



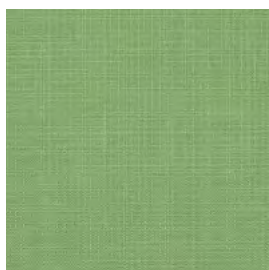
**PO 0702**



**PO 0703**



**PO 0707**



**PO 0800**



**PO 0801**

SP1  
**B**

Basic  
**SAMAC**



Composizione / Composition / Composition  
100% PP



Peso / Weight / Poids  
**390 g/m<sup>2</sup>**



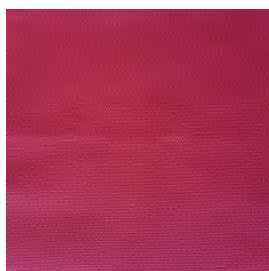
Resistenza alla luce / Light fastness / Résistance à la lumière  
**7 (ISO 105 B02)**



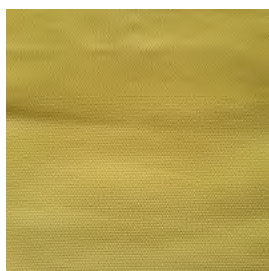
Resistenza allo sfregamento / Fastness to rubbing / Solidité au frottement  
**16.000 Martindale**



Resistenza al fuoco / Fire retardancy / Réaction au feu  
**EN 1021-1/2 cigarette & match test UK**



**B 0300**



**B 0100**



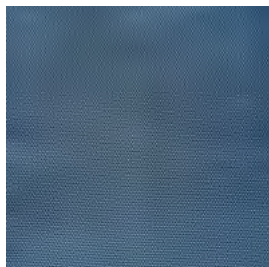
**B 0900**



**B 0801**



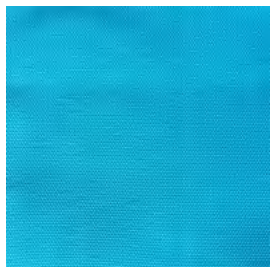
**B 0802**



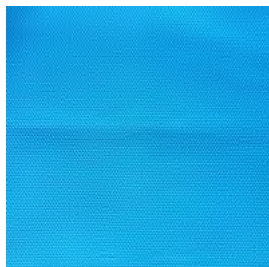
**B 0901**



**B 0601**



**B 0600**



**B 0500**



**B 0501**

SP2  
**AL**

Adriatica Libeccio

abitex



Composizione / Composition / Composition  
**100% PP**



Peso / Weight / Poids  
**415 g/m<sup>2</sup>**



Resistenza alla luce / Light fastness / Résistance à la lumière  
**7-8 (ISO 105 B02)**



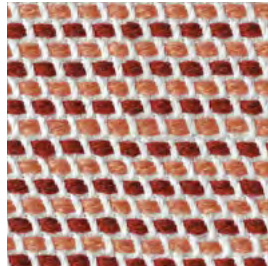
Resistenza allo sfregamento / Fastness to rubbing / Solidité au frottement  
**> 35.000 Martindale**



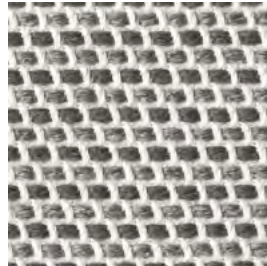
Resistenza al fuoco / Fire retardancy / Réaction au feu  
**NFPA 260 Class 1**



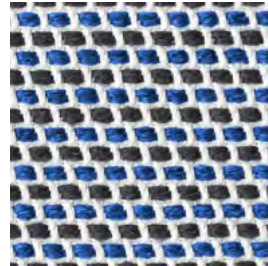
AL 0100



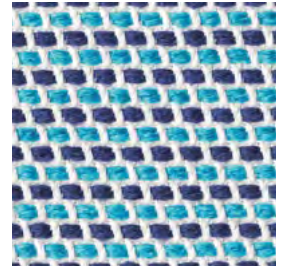
AL 300



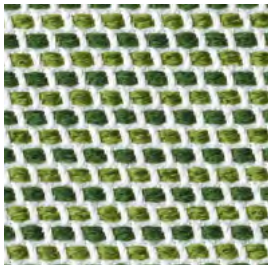
AL 400



AL 700



AL 709



AL 800

SP2  
**AM**

Adriatica Maestrale

abitex



Composizione / Composition / Composition  
**100% PP**



Peso / Weight / Poids  
**380 g/m<sup>2</sup>**



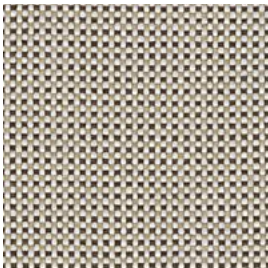
Resistenza alla luce / Light fastness / Résistance à la lumière  
**7-8 (ISO 105 B02)**



Resistenza allo sfregamento / Fastness to rubbing / Solidité au frottement  
**> 40.000 Martindale**



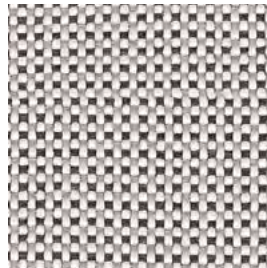
Resistenza al fuoco / Fire retardancy / Réaction au feu  
**NFPA 260 Class 1**



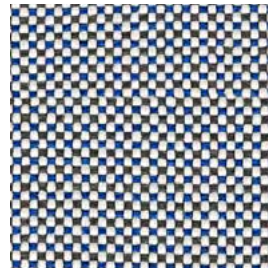
**AM 0100**



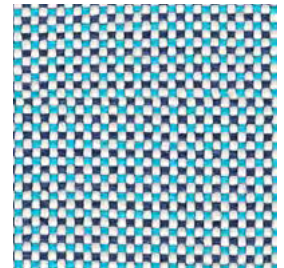
**AM 300**



**AM 400**



**AM 700**



**AM 709**



**AM 800**

---

Sample Kit

# MATERIALS & FINISHES



Composizione / Composition / Composition

**100% PL**



Peso / Weight / Poids

**310 g/m<sup>2</sup>**



Resistenza alla luce / Light fastness / Résistance à la lumière

**6 (EN ISO 105 B02)**



Resistenza allo sfregamento / Fastness to rubbing / Solidité au frottement

**35.000 cycles Martindale**



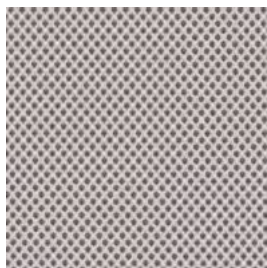
Resistenza al fuoco / Fire retardancy / Réaction au feu

**UNI 9174**

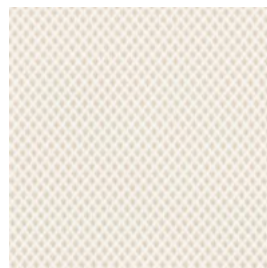
**UNI 8456**

**CLASSE 1 IM\***

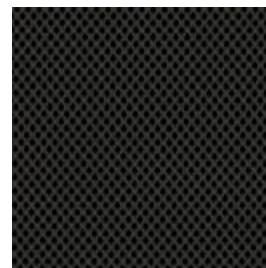
**\*a seconda dei modelli (vedi elenco omologazioni)**



**RS 0003**



**RS 0002**



**RS 0001**



**RS 0004**

## Rete / Mesh / Résille

# CM

Per / For / Pour mod.  
**Loop, Sky Mesh**



Composizione / Composition / Composition

**61% PES**  
**39% PA**



Peso / Weight / Poids

**480 g/m<sup>2</sup>**



Resistenza alla luce / Light fastness / Résistance à la lumière

**5 (EN ISO 105 B02)**



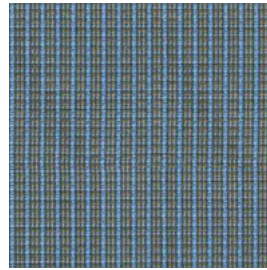
Resistenza allo sfregamento / Fastness to rubbing / Solidité au frottement

**> 100.000 cycles Martindale**

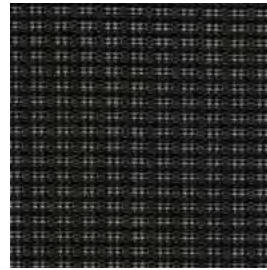


Resistenza al fuoco / Fire retardancy / Réaction au feu

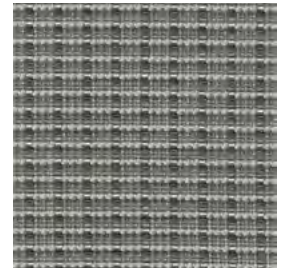
**EN 1021-1/2 cigarette & match test UK**



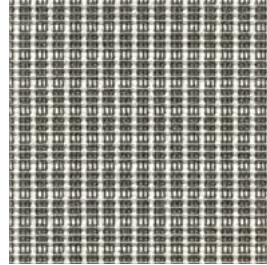
**CM 0700**



**CM 0900**



**CM 0800**



**CM 0600**

## Tessuto autoportante / Supportive fabric / Tissu autoportant

# KT

Per / For / Pour mod.

**Loop**



Composizione / Composition / Composition

**70% PL**  
**30% PA**



Peso / Weight / Poids

**720 g/lm**



Resistenza alla luce / Light fastness / Résistance à la lumière

**6 (EN ISO 105 B02)**



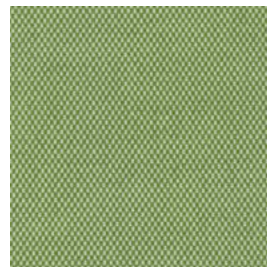
Resistenza allo sfregamento / Fastness to rubbing / Solidité au frottement

**300.000 cycles Martindale**



Resistenza al fuoco / Fire retardancy / Réaction au feu

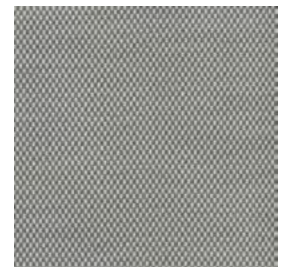
**EN 1021-1/2 cigarette & match test UK**



**KT 0090**



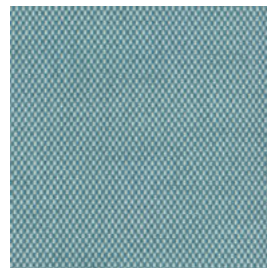
**KT 0011**



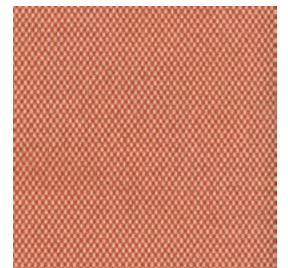
**KT 0022**



**KT 0021**



**KT 0080**



**KT 0060**

---

Plastica / Plastic / Plastique

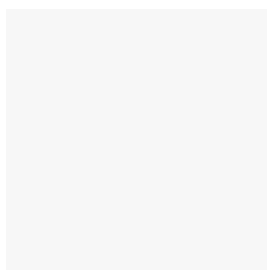
# PXV

Plastica Voilà  
Voilà plastic  
Plastique Voilà

 100% Polipropilene



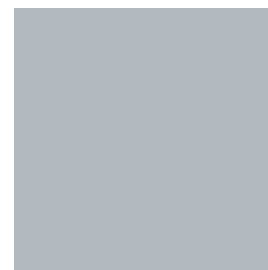
PXV 034



PXV 030



PXV 032



PXV 033

---

Plastica / Plastic / Plastique

# PXW

Plastica Wendy  
Wendy plastic  
Plastique Wendy

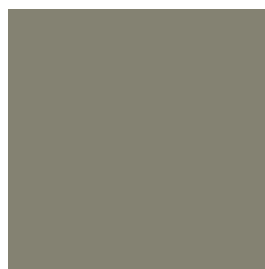
 100% Polipropilene



PXW 041



PXW 045



PXW 048



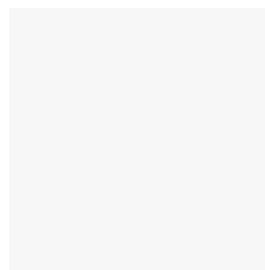
PXW 043



PXW 042



PXW 044 Avocado



PXW 046

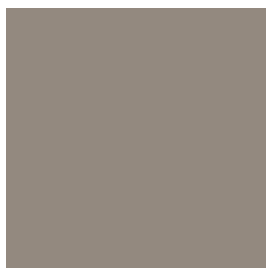
---

Plastica / Plastic / Plastique

# PXR

Plastica Role  
Role plastic  
Plastique Role

 100% Polipropilene



PXR 072



PXR 050



PXR 062



PXR 020



PXR 030



PXR 035

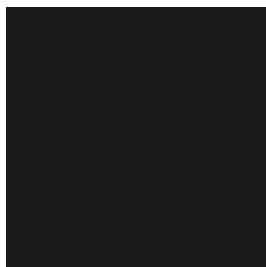
---

Plastica / Plastic / Plastique

# PXD

Plastica Dolly  
Dolly plastic  
Plastique Dolly

 100% Polipropilene



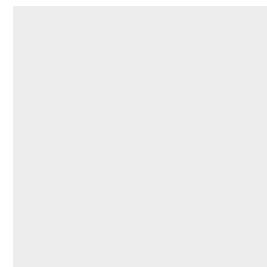
PXD 090



PXD 070



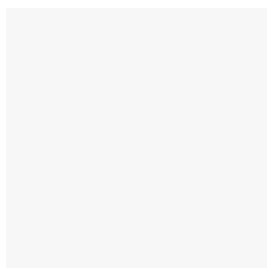
PXD 051



PXD 071



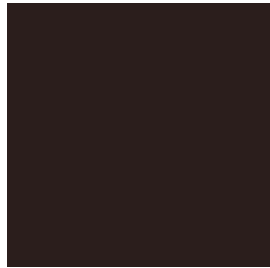
PXD 031



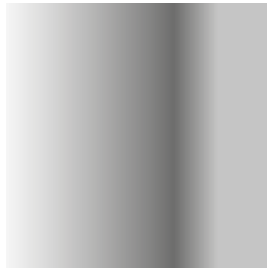
PXD 011

# Metal finish

Finiture metalliche standard  
Standard metal finishes  
Finitions métalliques standard



**N** Signal black

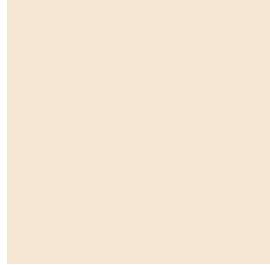


**C** Chrome

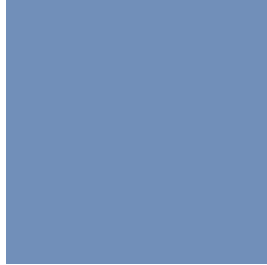


**L** Aluminium

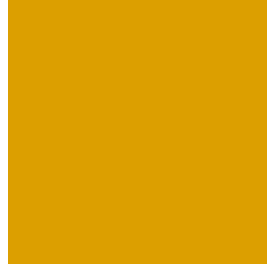
Finiture metalliche speciali  
Special metal finishes  
Finitions métalliques spéciales



**E** Oyster white



**I** Butterfly Blue



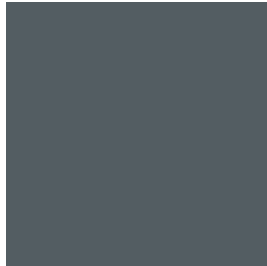
**J** Broom yellow



**H1** Corrosion red



**K** Dark green



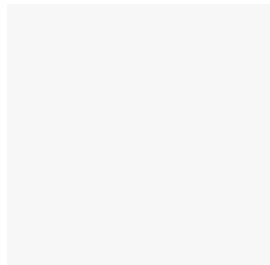
**B2** Basalt grey



**U** Bronze



**V** Copper



**W** Signal white

Code	Colour	Ref
<b>N</b>	Signal black	<b>RAL 9004</b>
<b>C</b>	Chrome	
<b>L</b>	Aluminium	
<b>E</b>	Oyster white	<b>RAL 1013</b>
<b>I</b>	Butterfly Blue	<b>RAL 270 60 35</b>
<b>J</b>	Broom yellow	<b>RAL 1032</b>
<b>H1</b>	Corrosion red	<b>RAL 040 30 40</b>
<b>K</b>	Dark green	<b>NCS S 6010 B90G</b>
<b>B2</b>	Basalt grey	<b>RAL 7012</b>
<b>U</b>	Bronze	<b>BROWN 547</b>
<b>V</b>	Copper	<b>X191.Z172</b>
<b>W</b>	Signal white	<b>RAL 9003</b>

Legno / Wood / Bois

## Solid wood

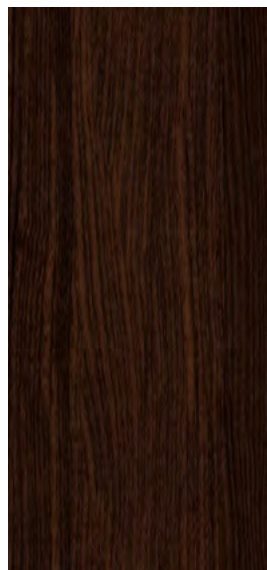
Essenze legno  
Wood essences  
Essences de bois



Natural beech



Oak



Tobacco

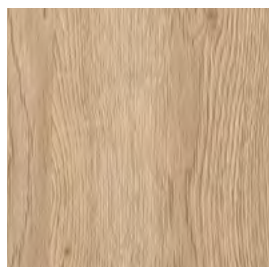


Black

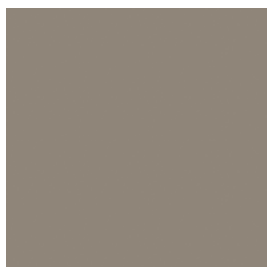
Legno / Wood / Bois

## Top finish

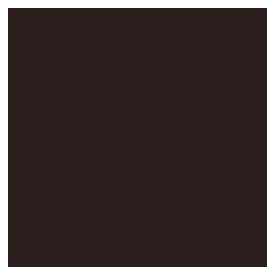
Laminato e laccato  
Laminate and lacquered  
Stratifié et laqué



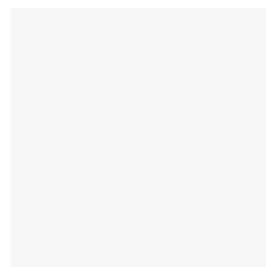
**R** Oak laminate



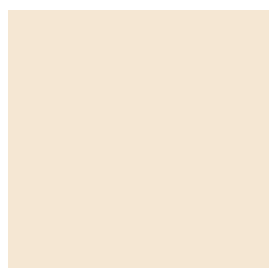
**B3** Taupe laminate



**N** Signal black



**W** Signal white



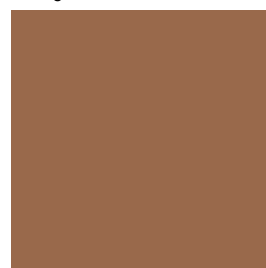
**E** Oyster white



**I** Butterfly Blue



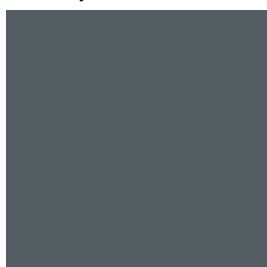
**J** Broom yellow



**H1** Corrosion red



**K** Dark green



**B2** Basalt grey



**U** Bronze



**V** Copper

---

# Sample Kit

## Milani Srl

### **Sede legale/showroom:**

Via delle Industrie II, 5/7  
30020 – Meolo (VE), Italia

### **Sede operativa/uffici:**

Via Giorgione, 21  
31056 – Roncade (TV), Italia

T. +39 0422 1860501  
F. +39 0422 1860599  
info@sm-milani.com  
www.sm-milani.com